

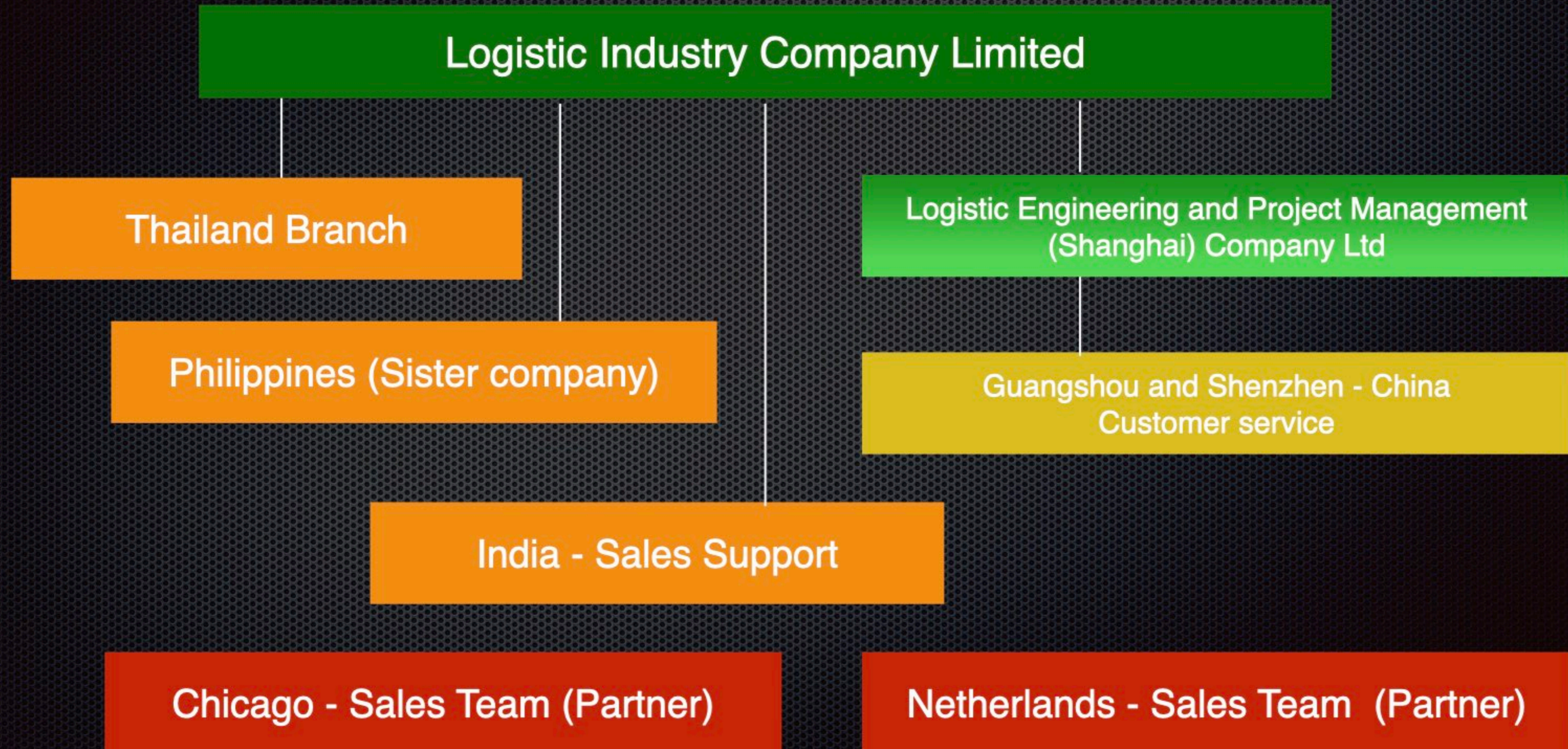
Logistic Industry Company Limited

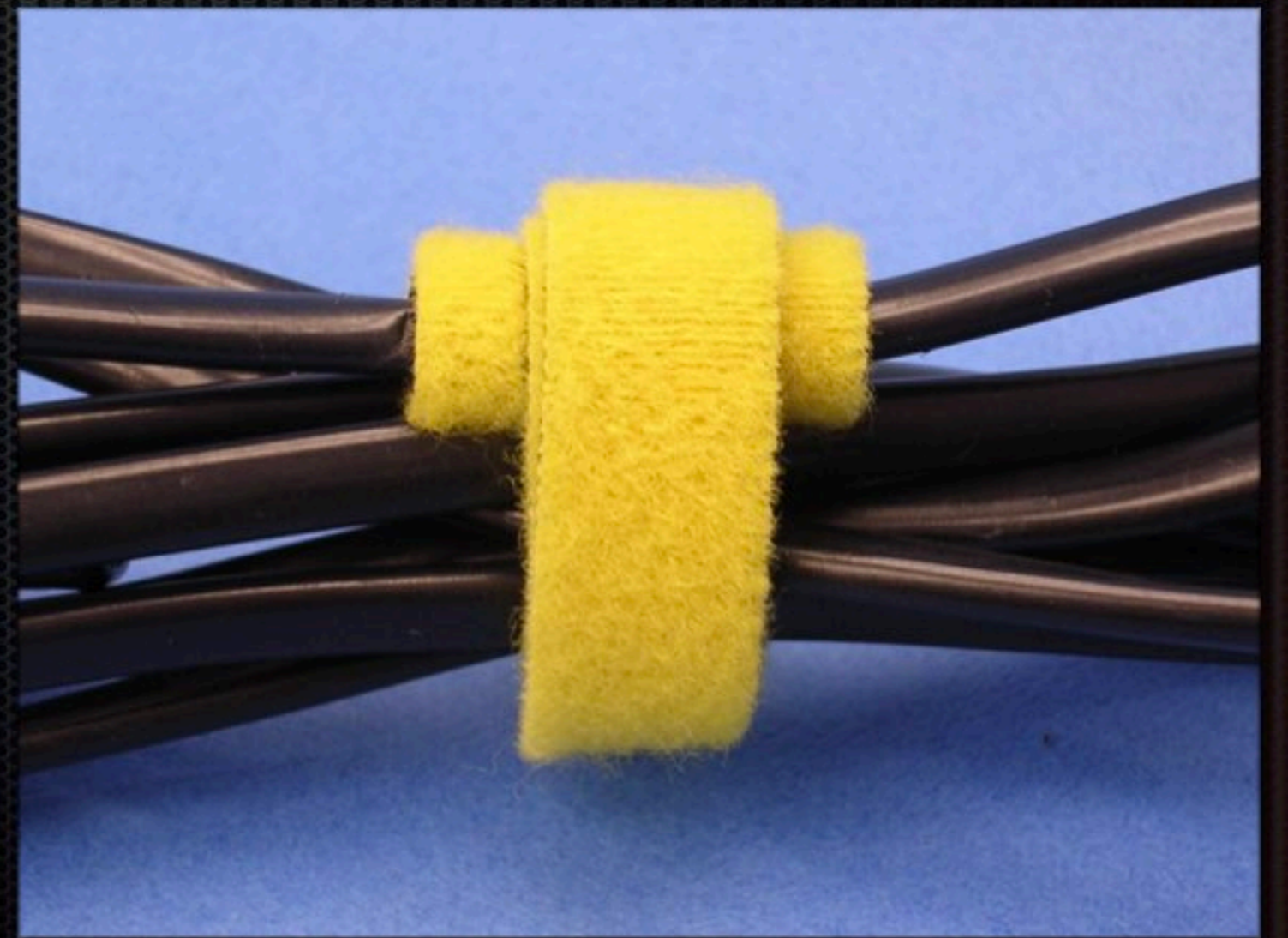
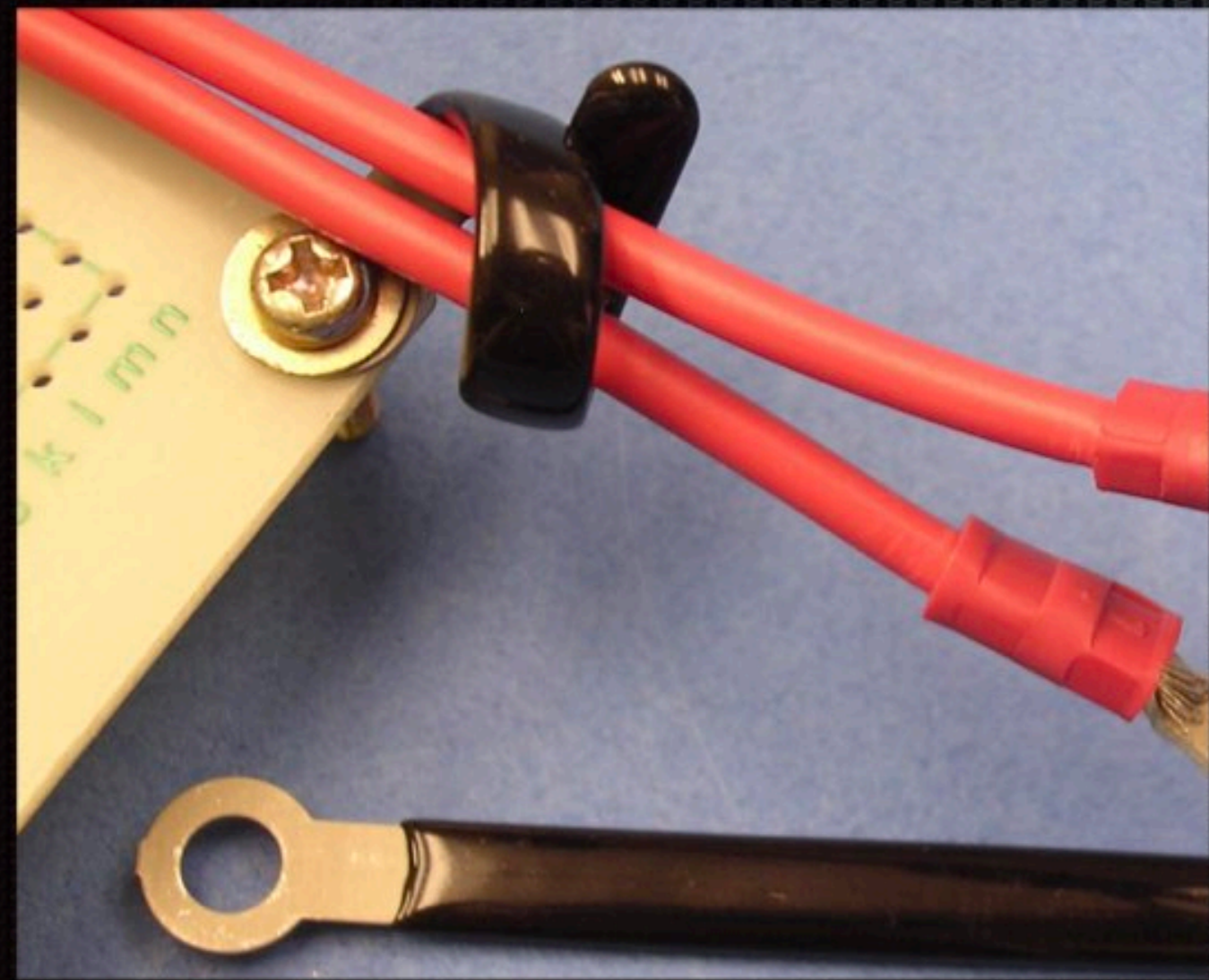
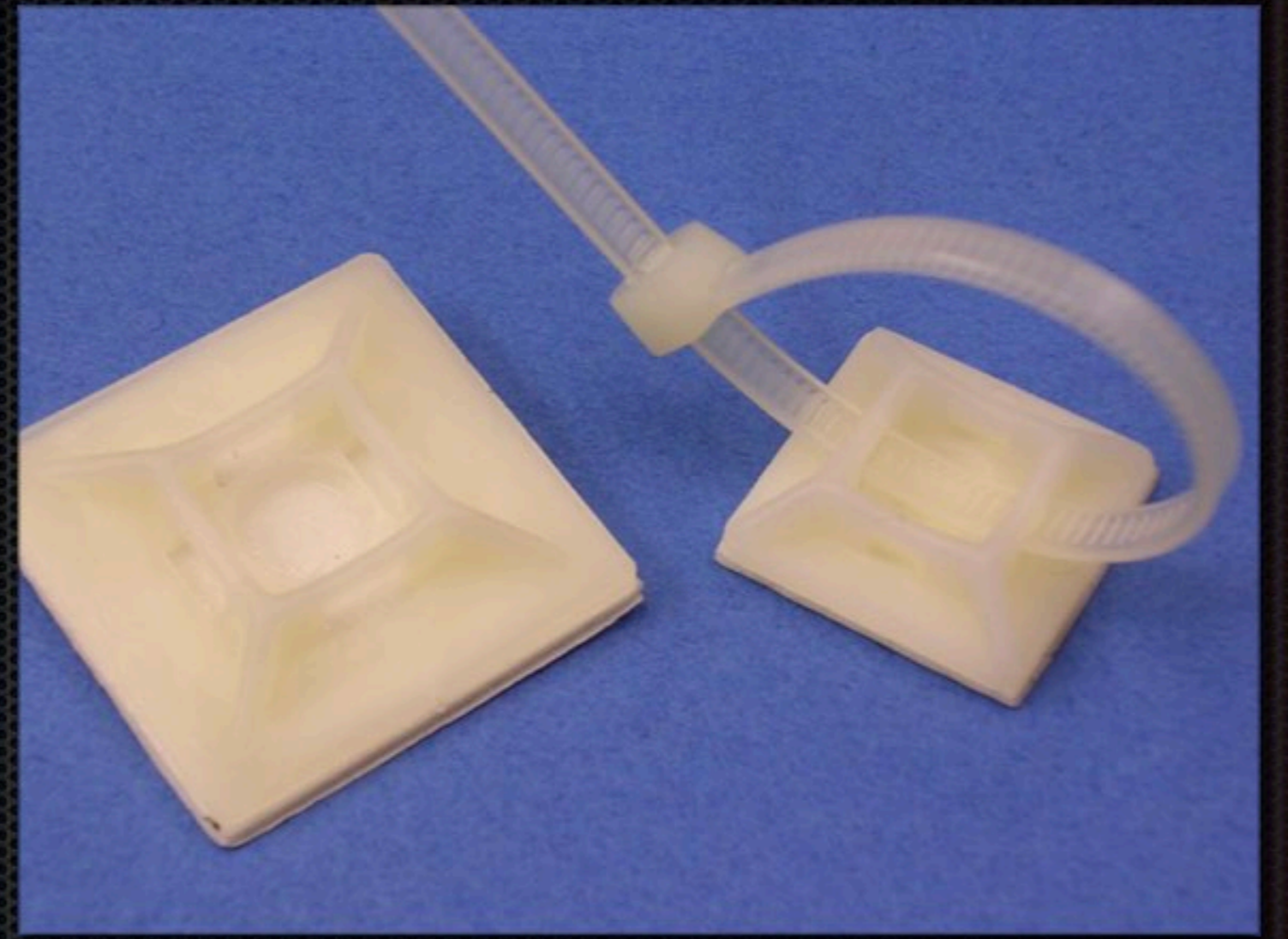
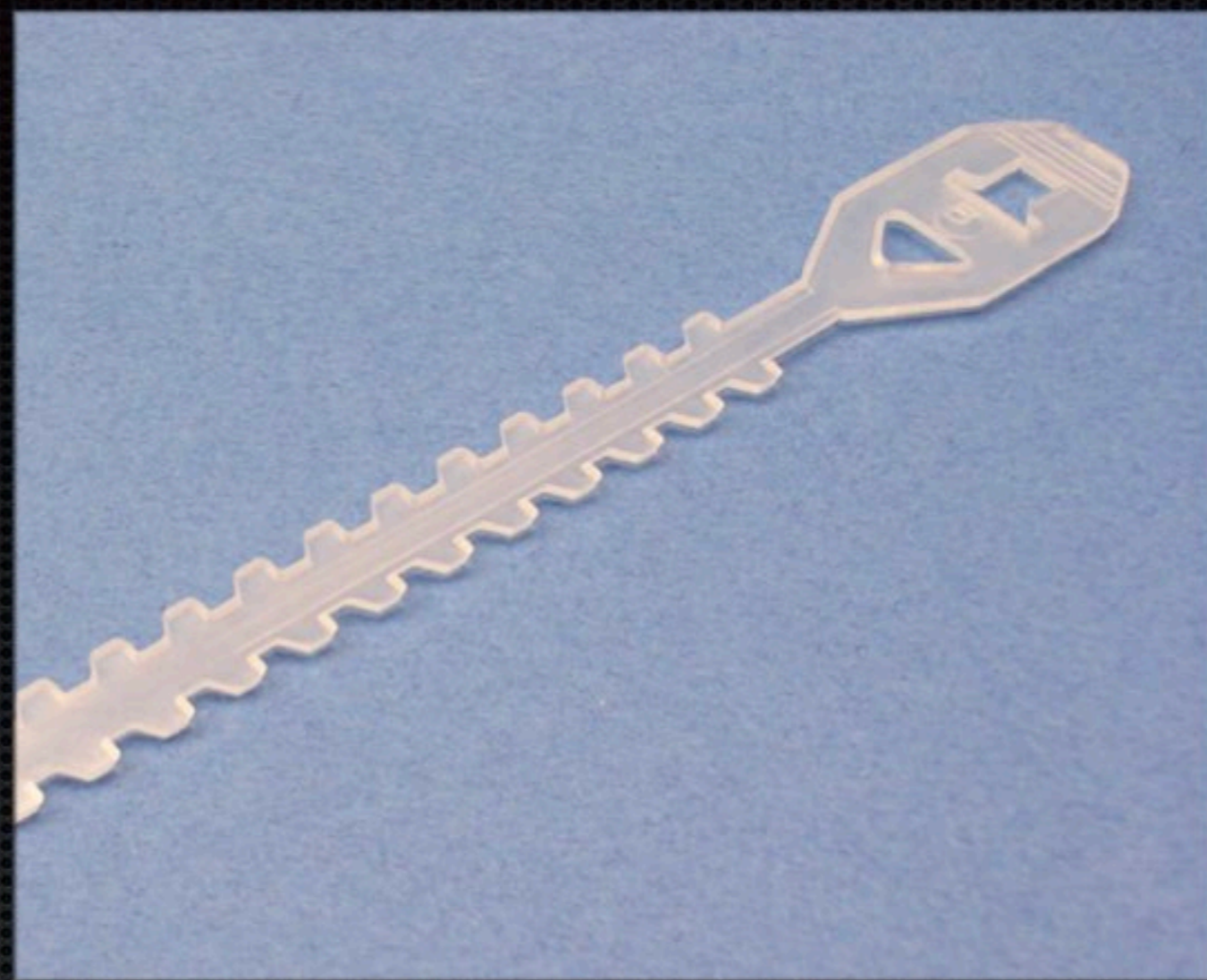
2025

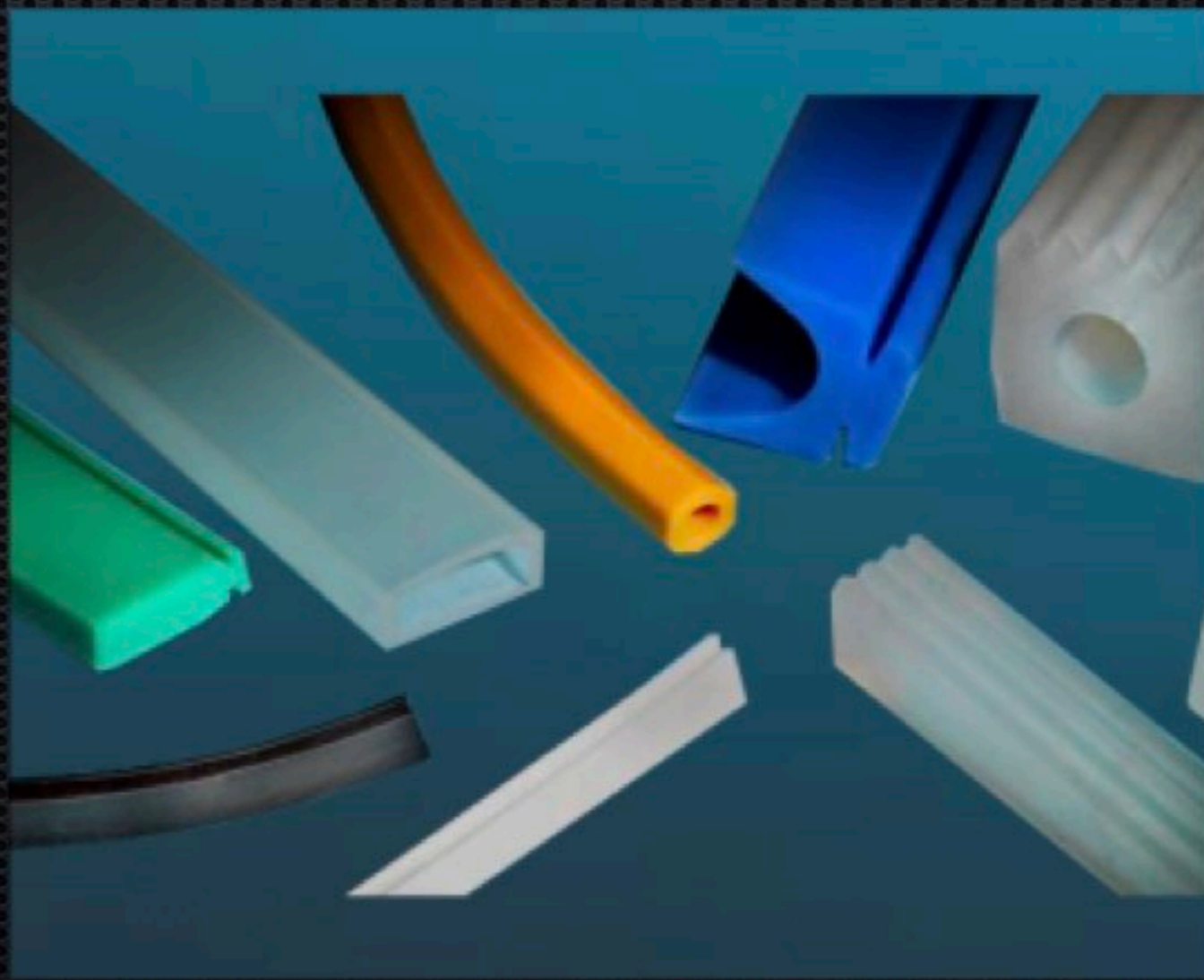
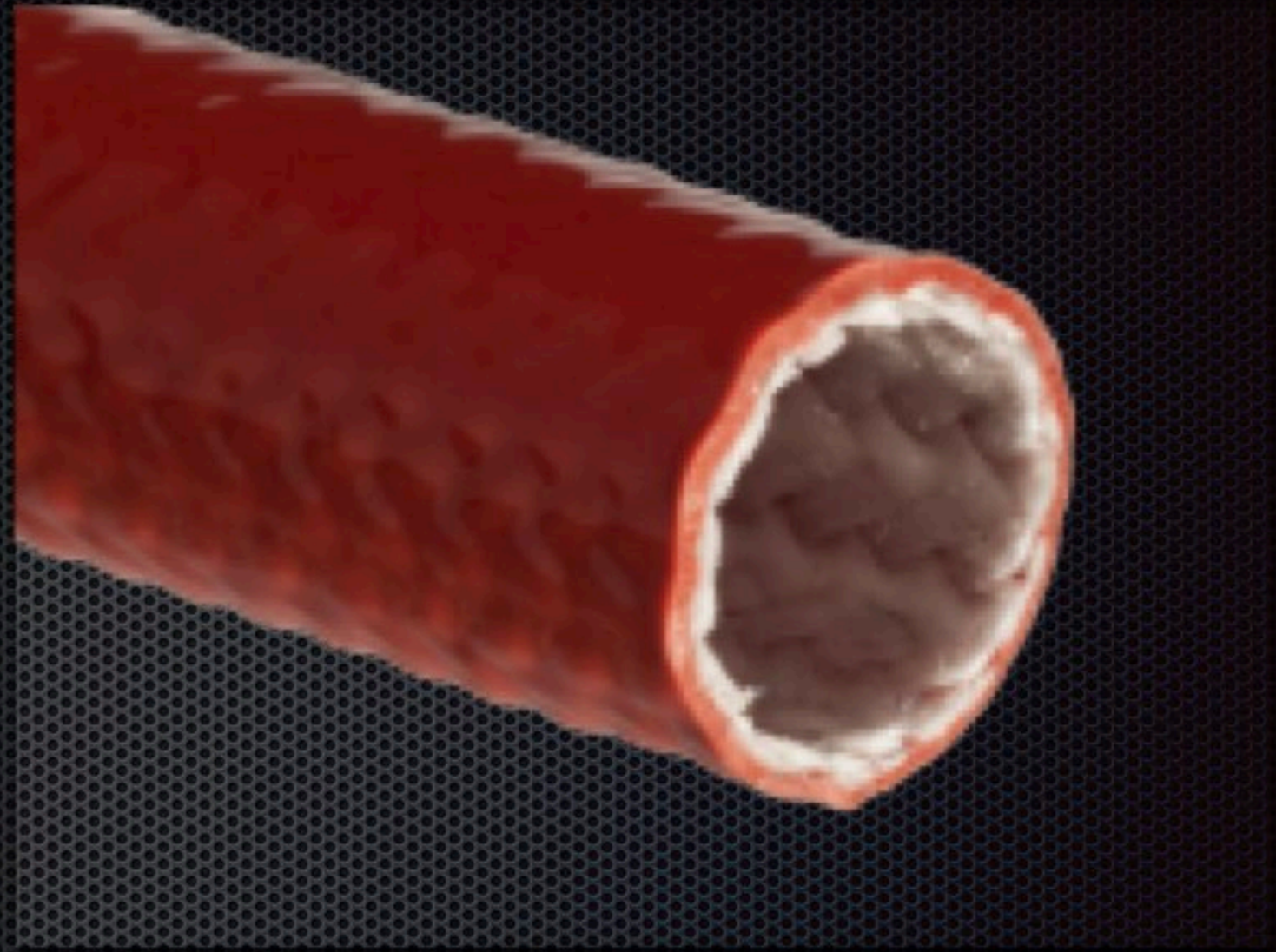
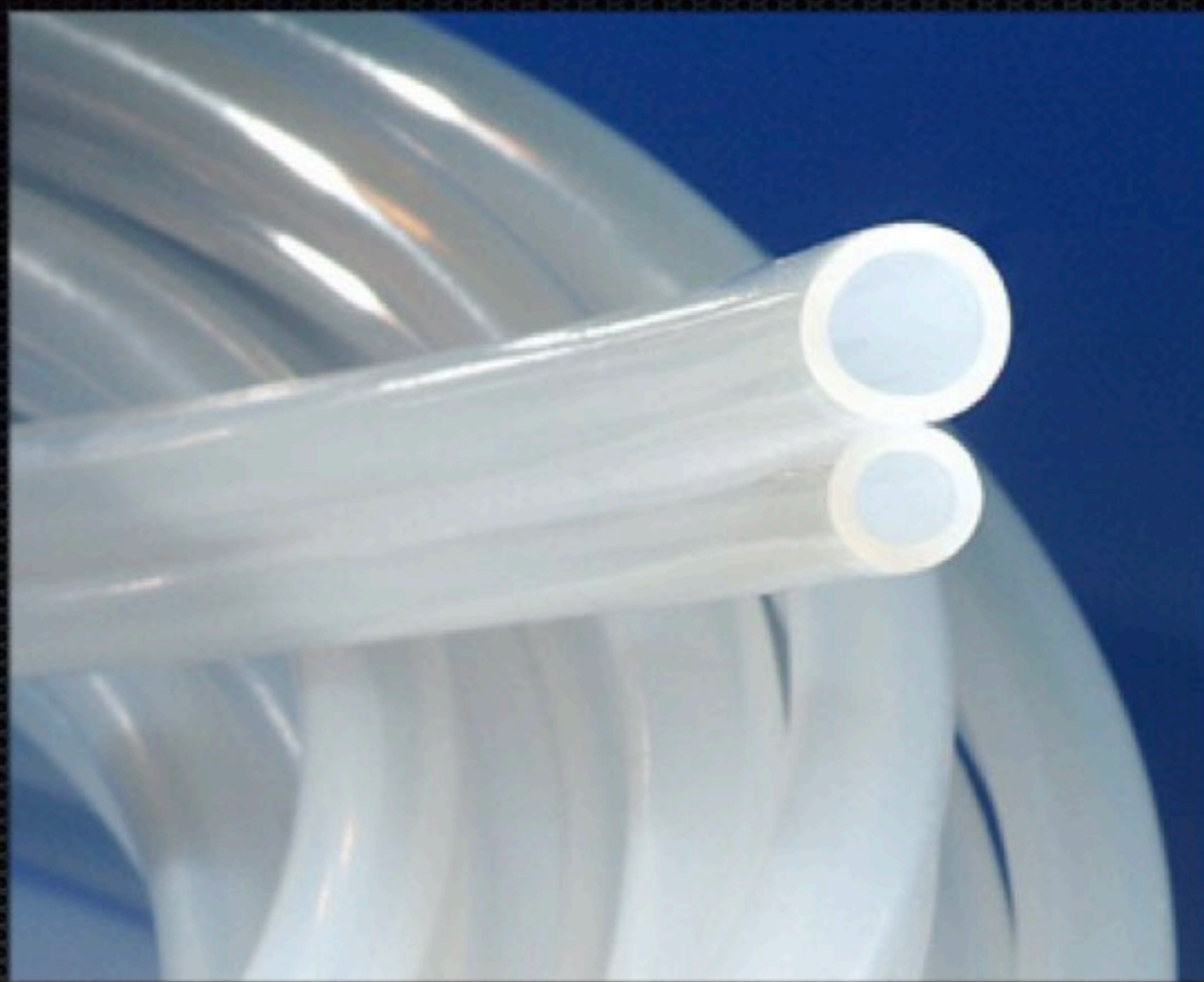
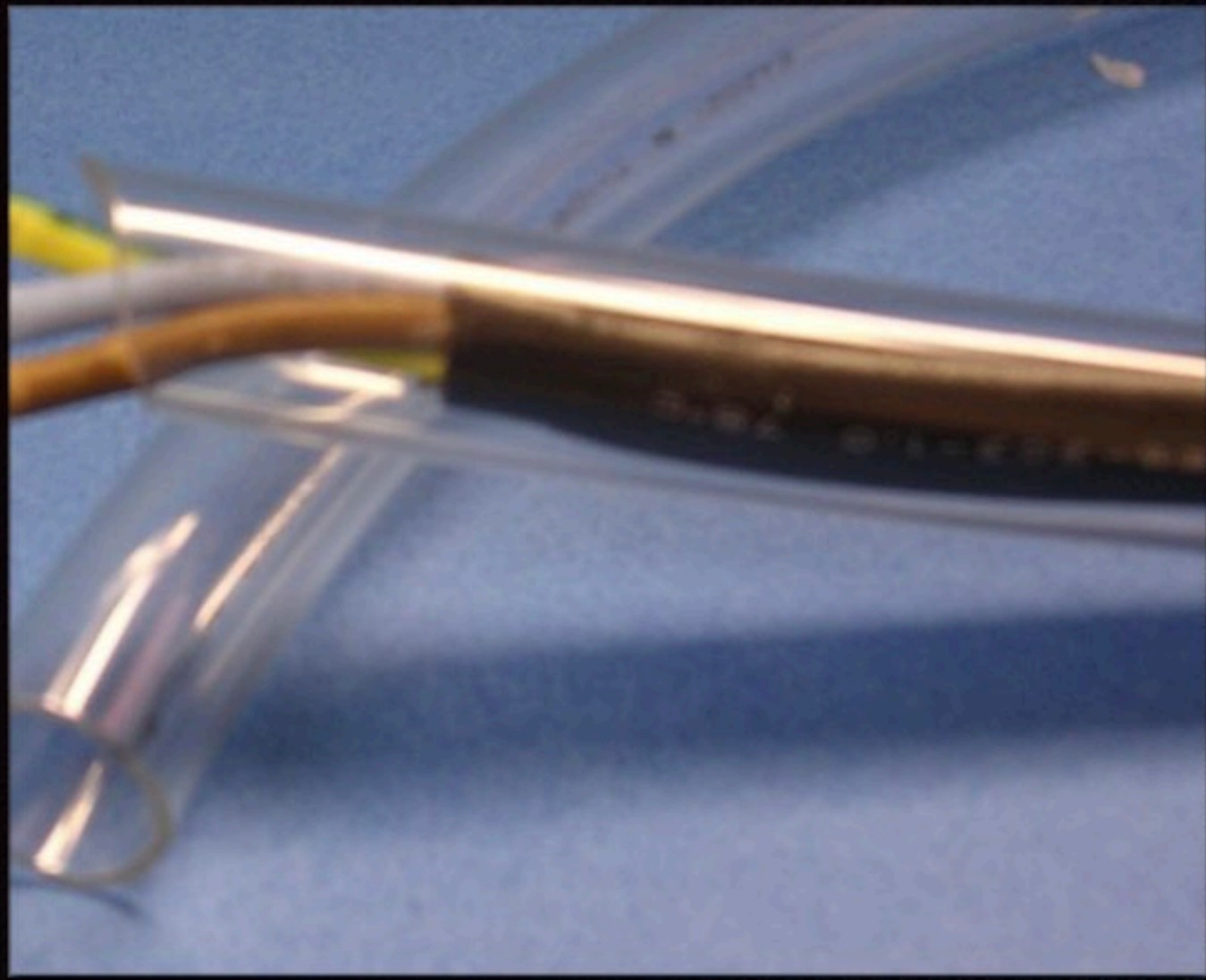
About us

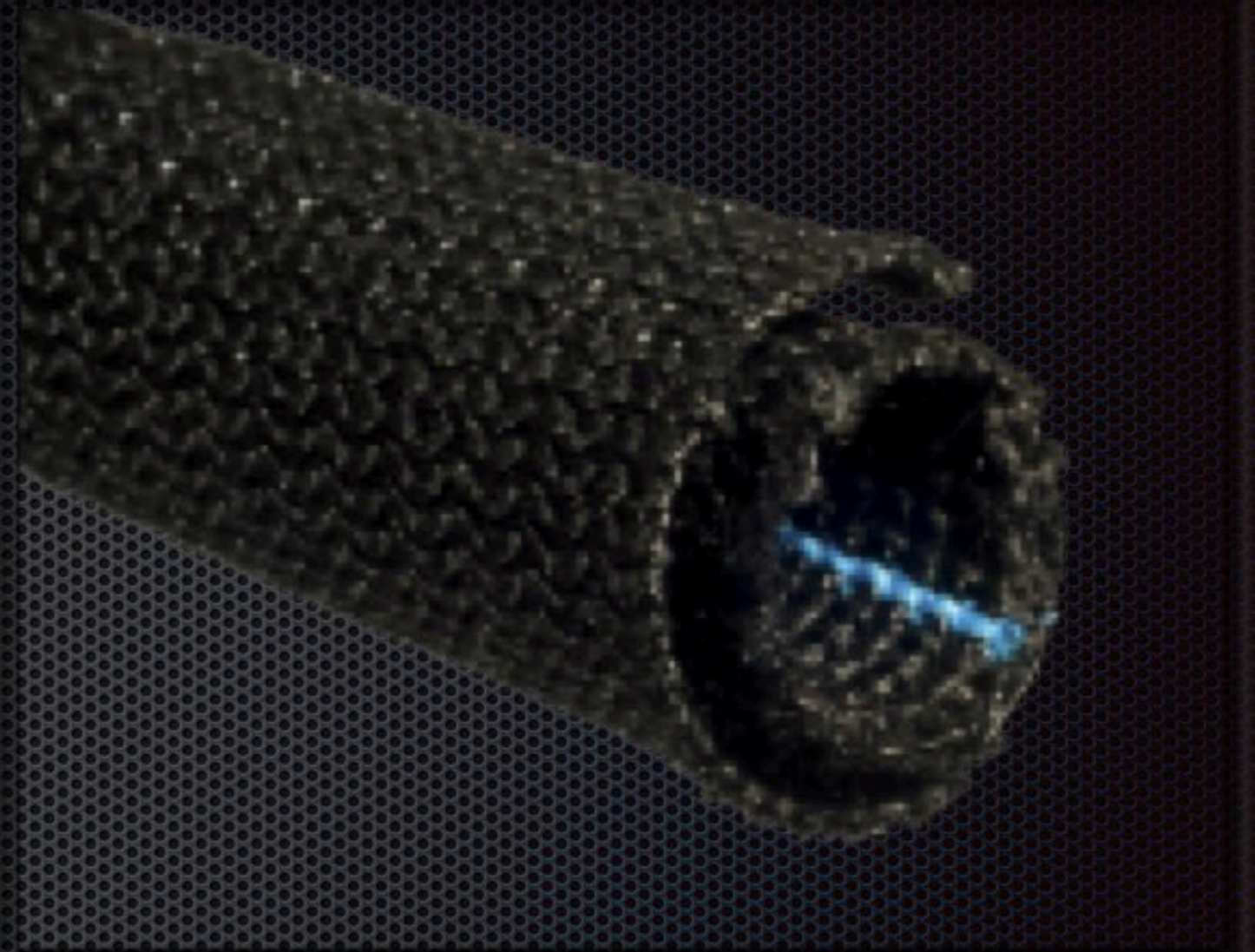
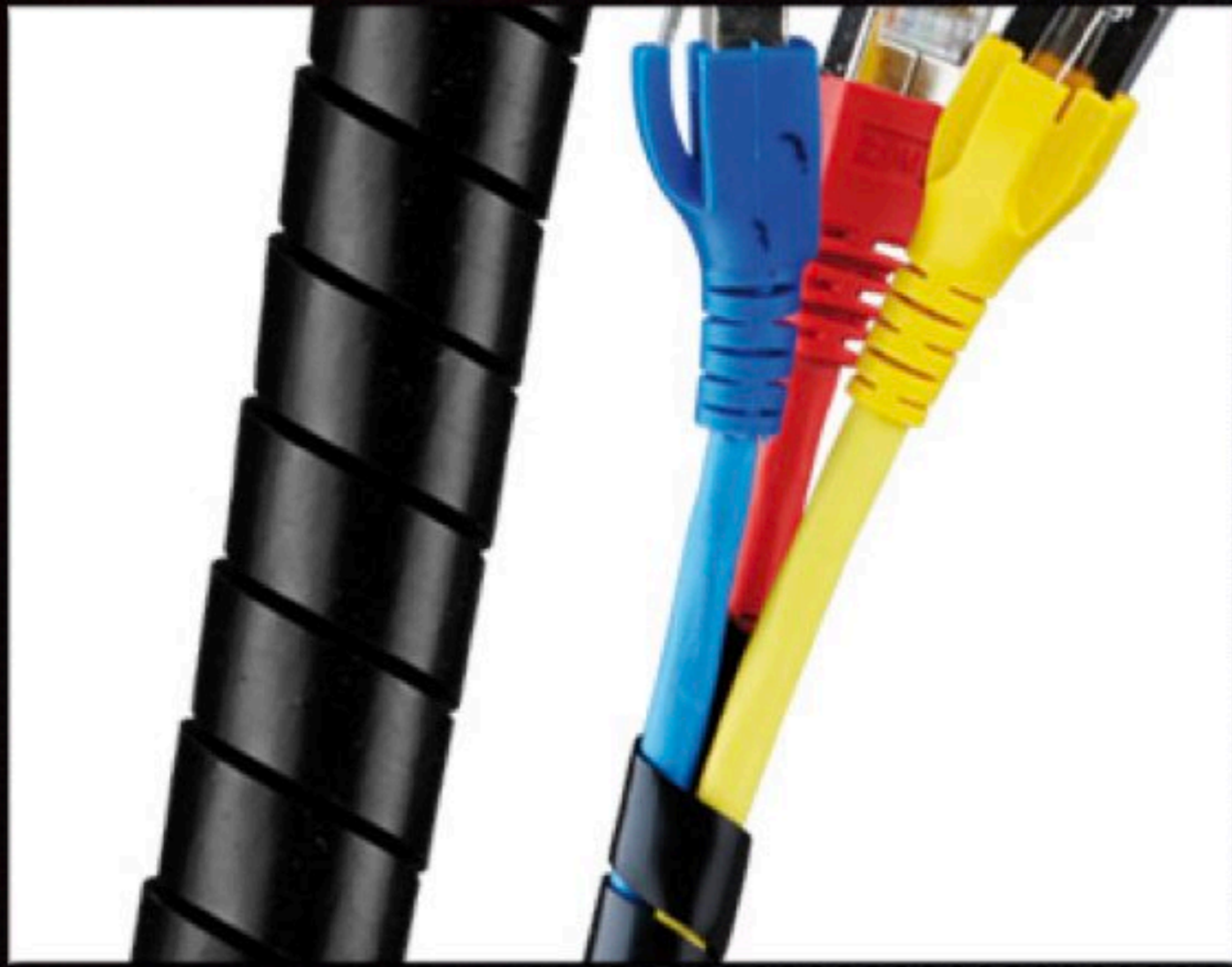
- Starting with the history of Logistic Industrial Supply Co., Ltd. (LISCL) which was established in 1977
- Import of cable fasteners for manufacturing industry in HK
- Year 2018 - Logistic Engineering & Project Management (Shanghai) Co., Ltd.
- Jan 2024 - Logistic International Company Limited - Thailand
- July 2024 - Logistic Industry Company Limited (LICL) was established
- Sept 2024 - LISCL officially transferred the whole trading business to LICL to carry on
- Oct 2024 - Logistic Philippines Sales team established
- Websites : <https://logistichk.com>

Organisation Chart

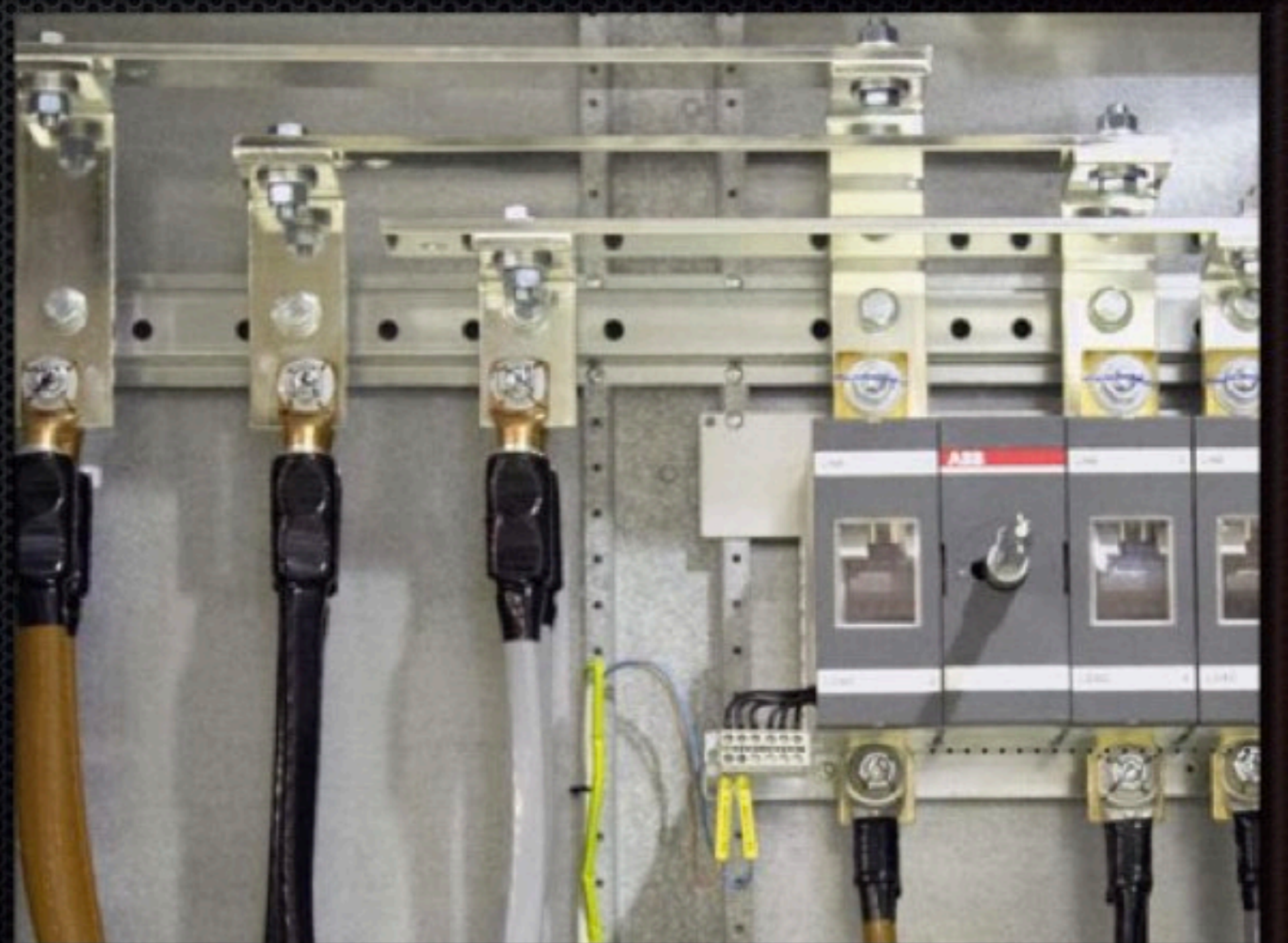


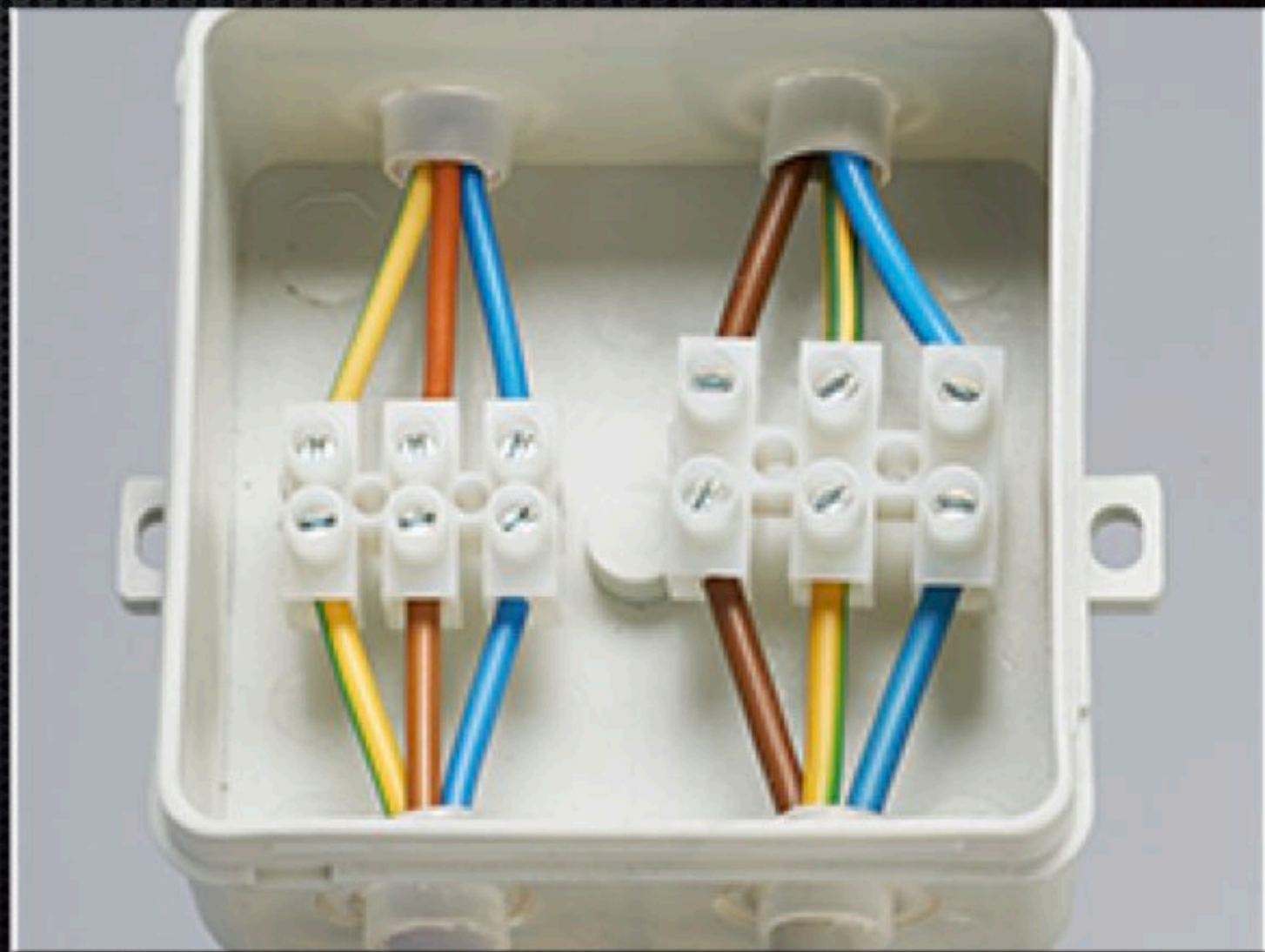
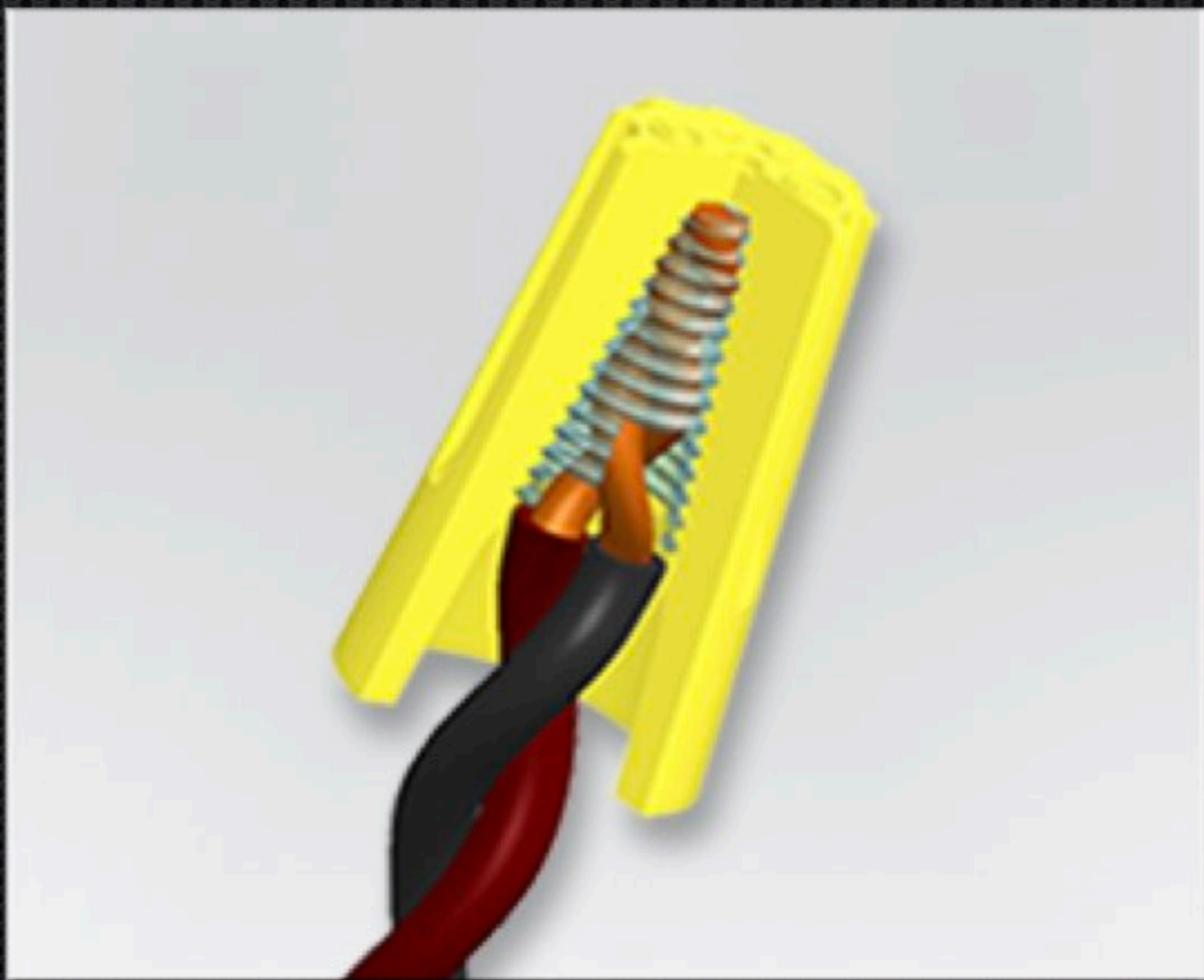
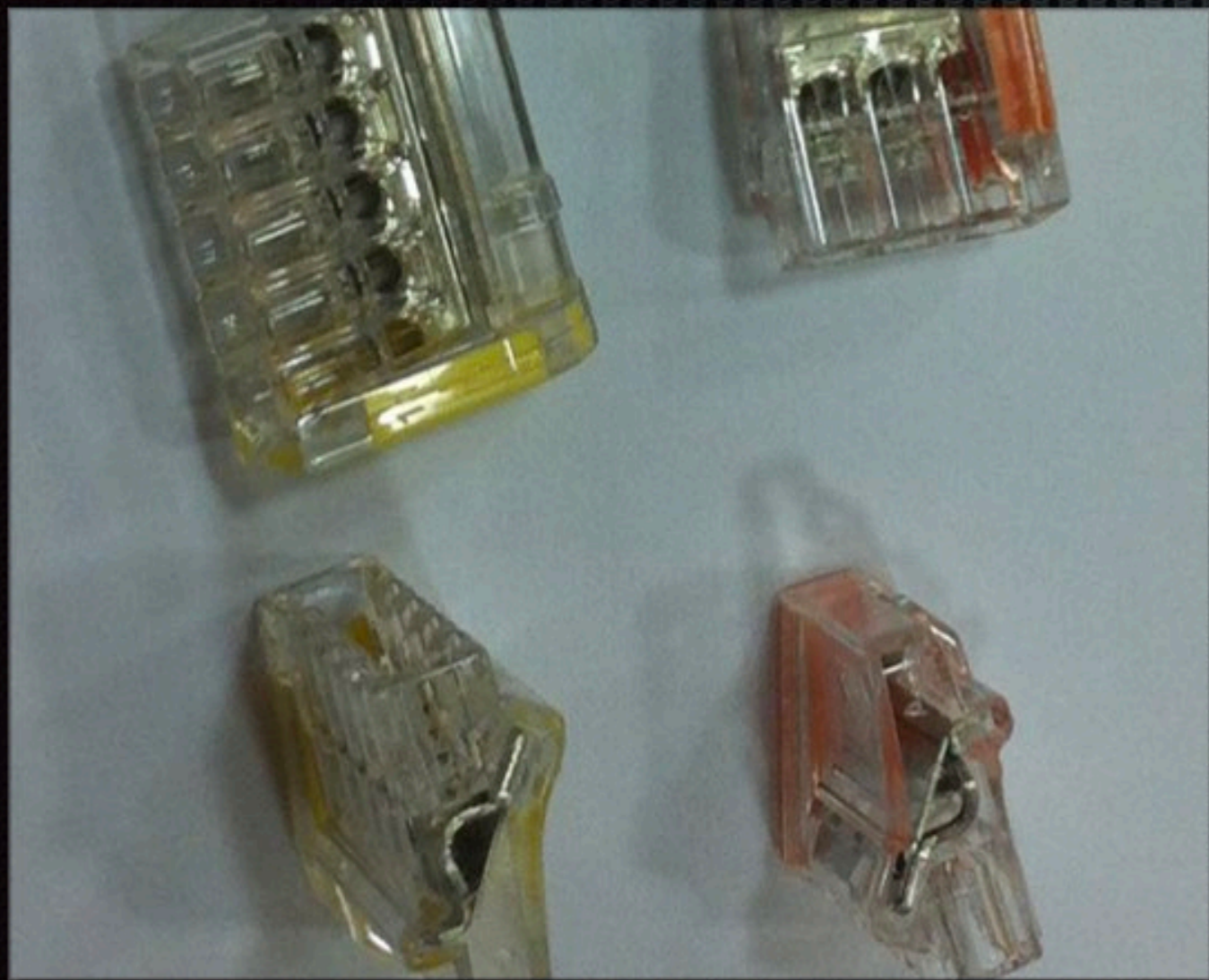
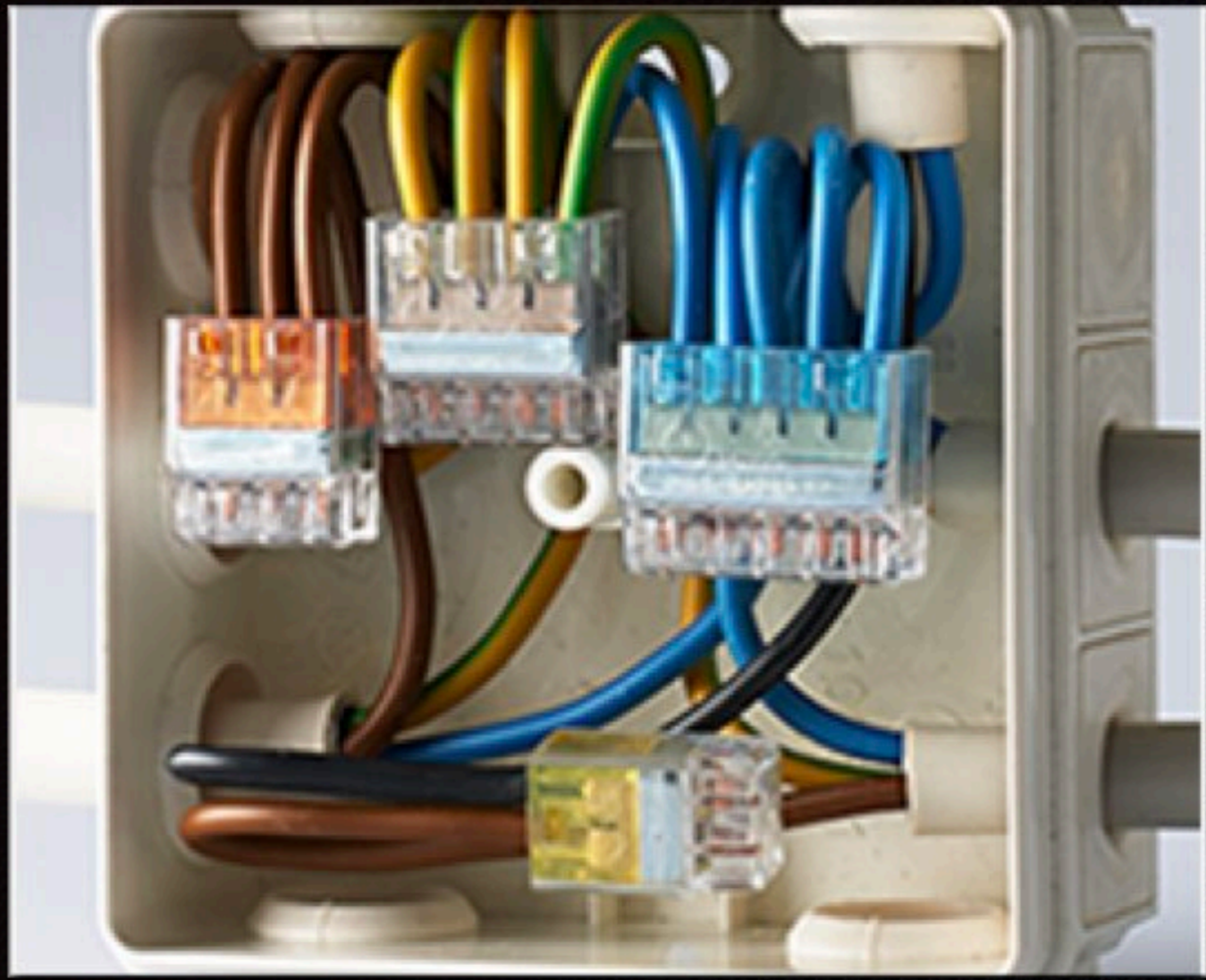












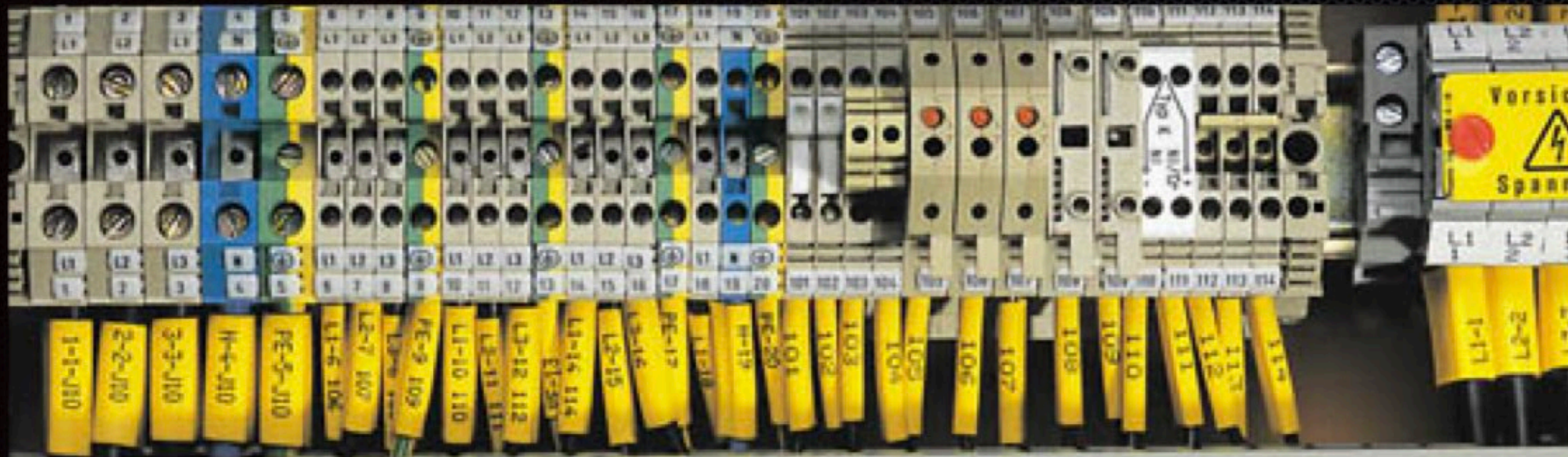




Printable Heat Shrink tube MK10, T1000

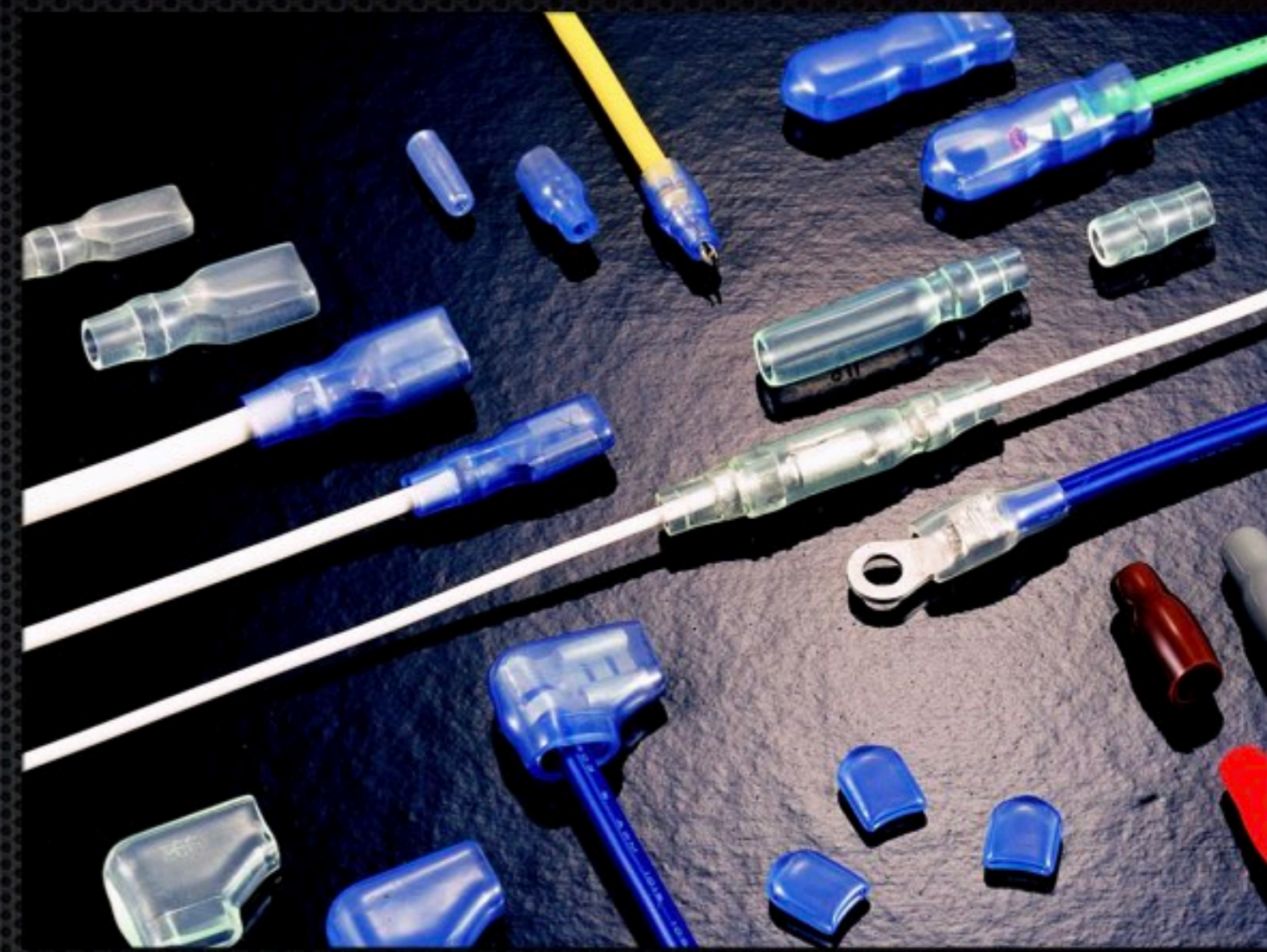
X **PARTEX**
MARKING SYSTEMS

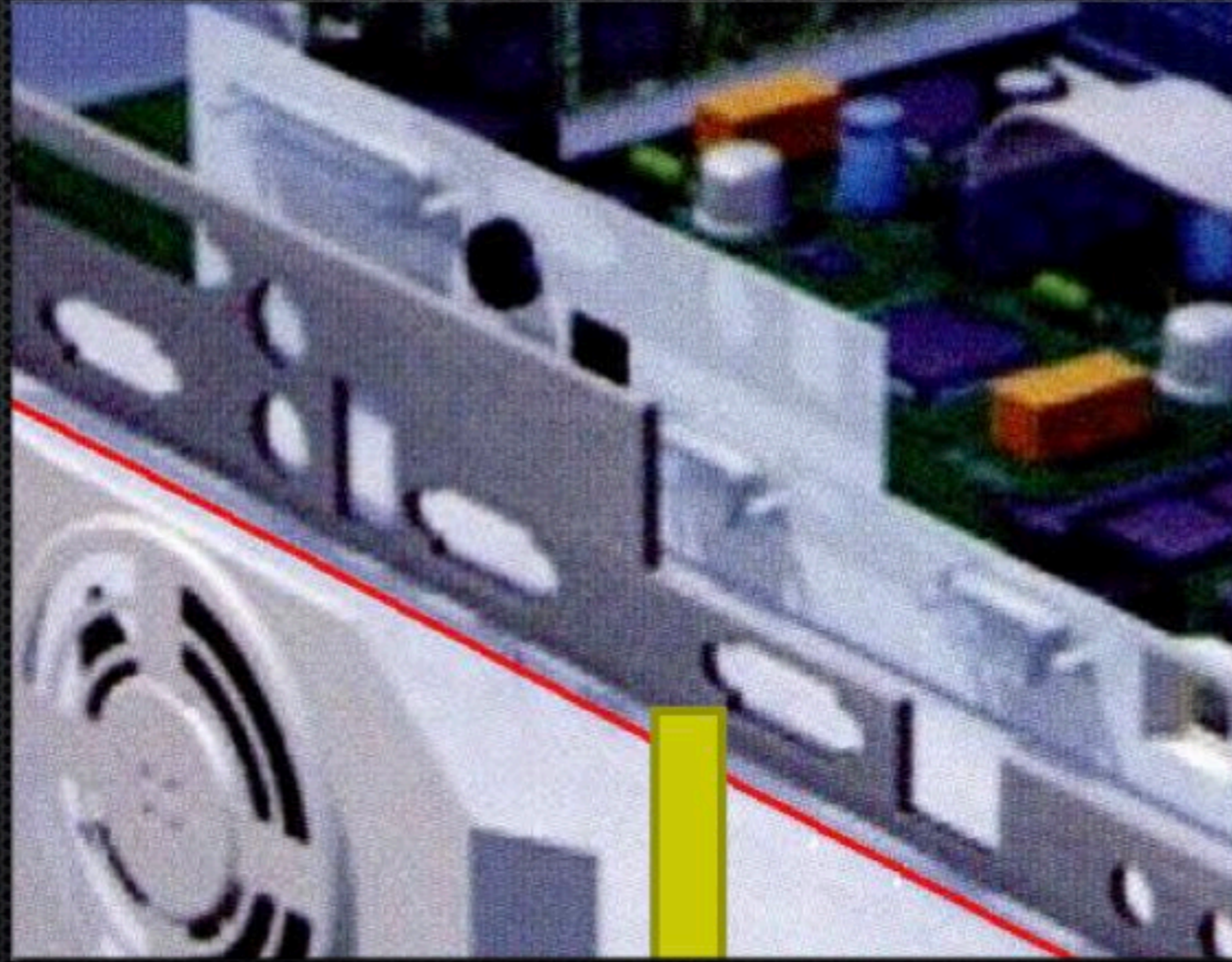
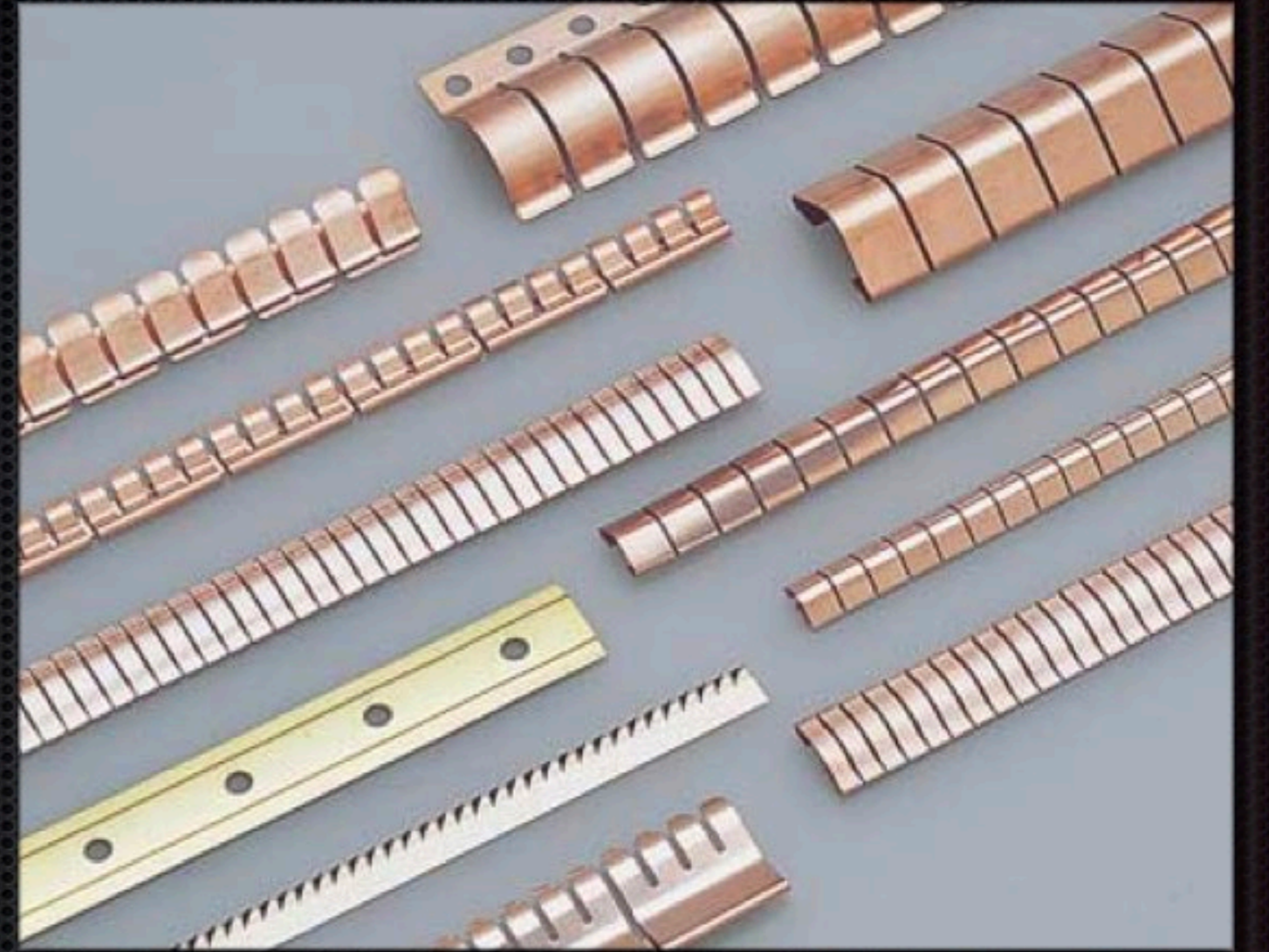
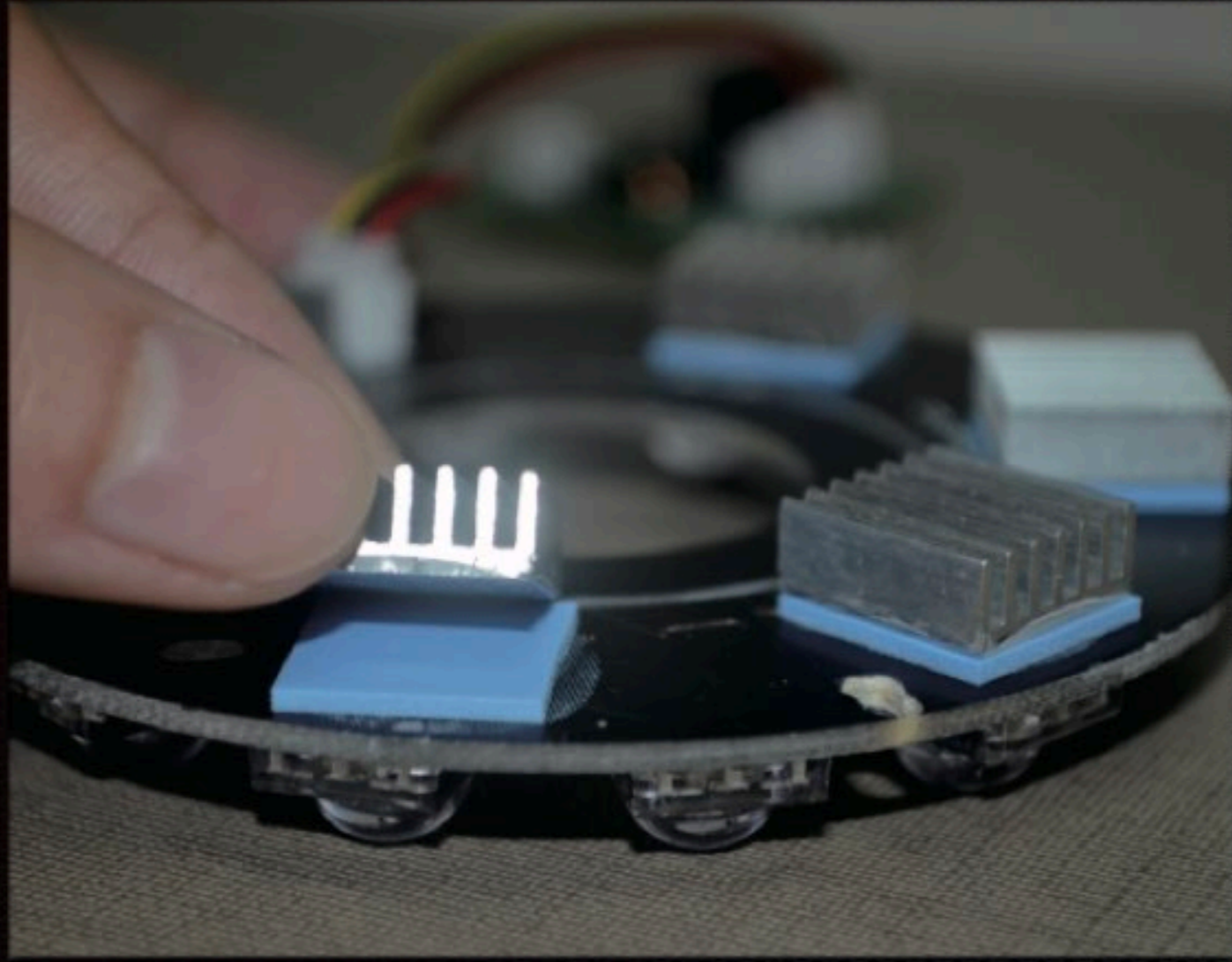




Marking System





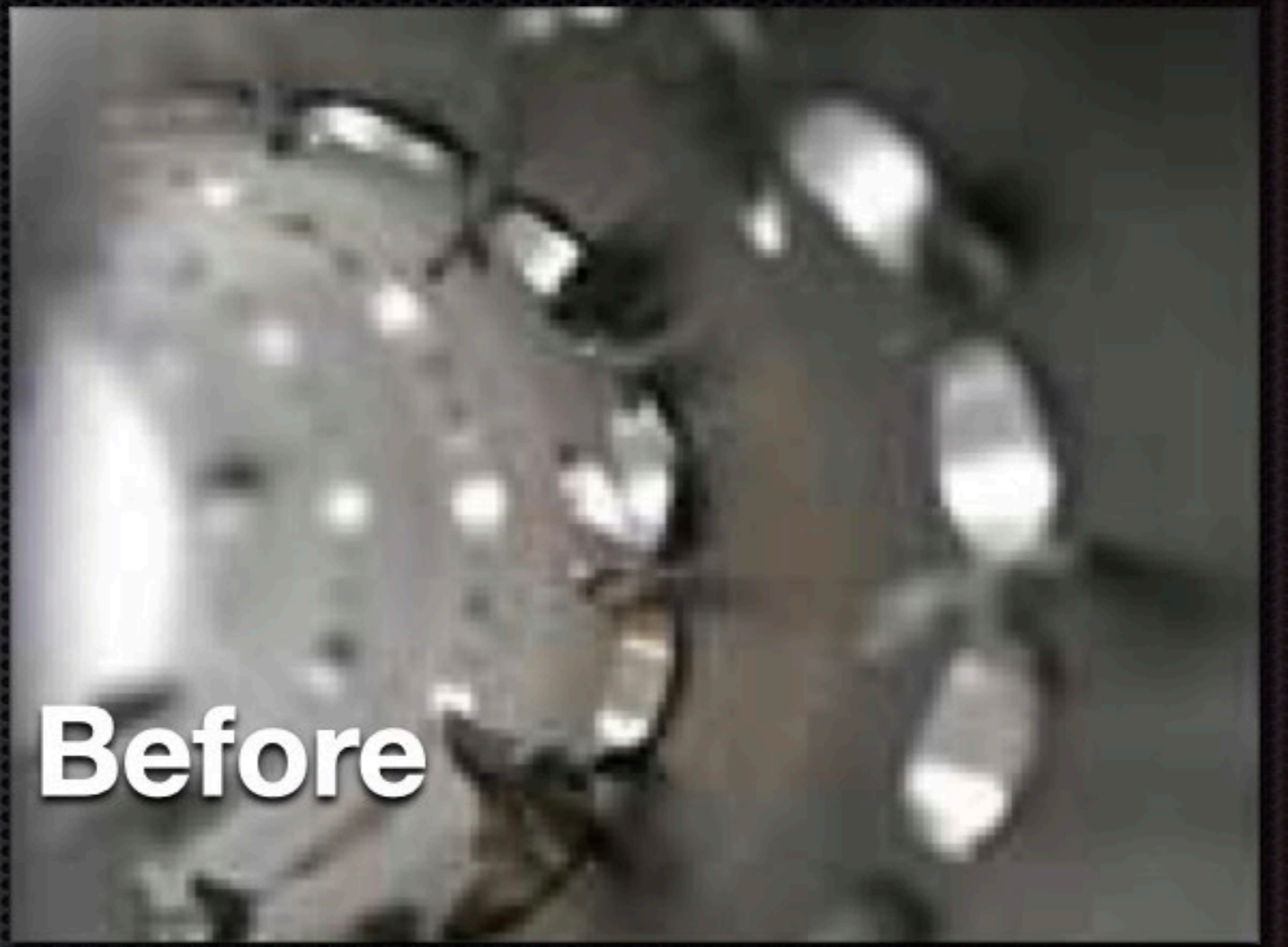


MADE IN U.S.A.

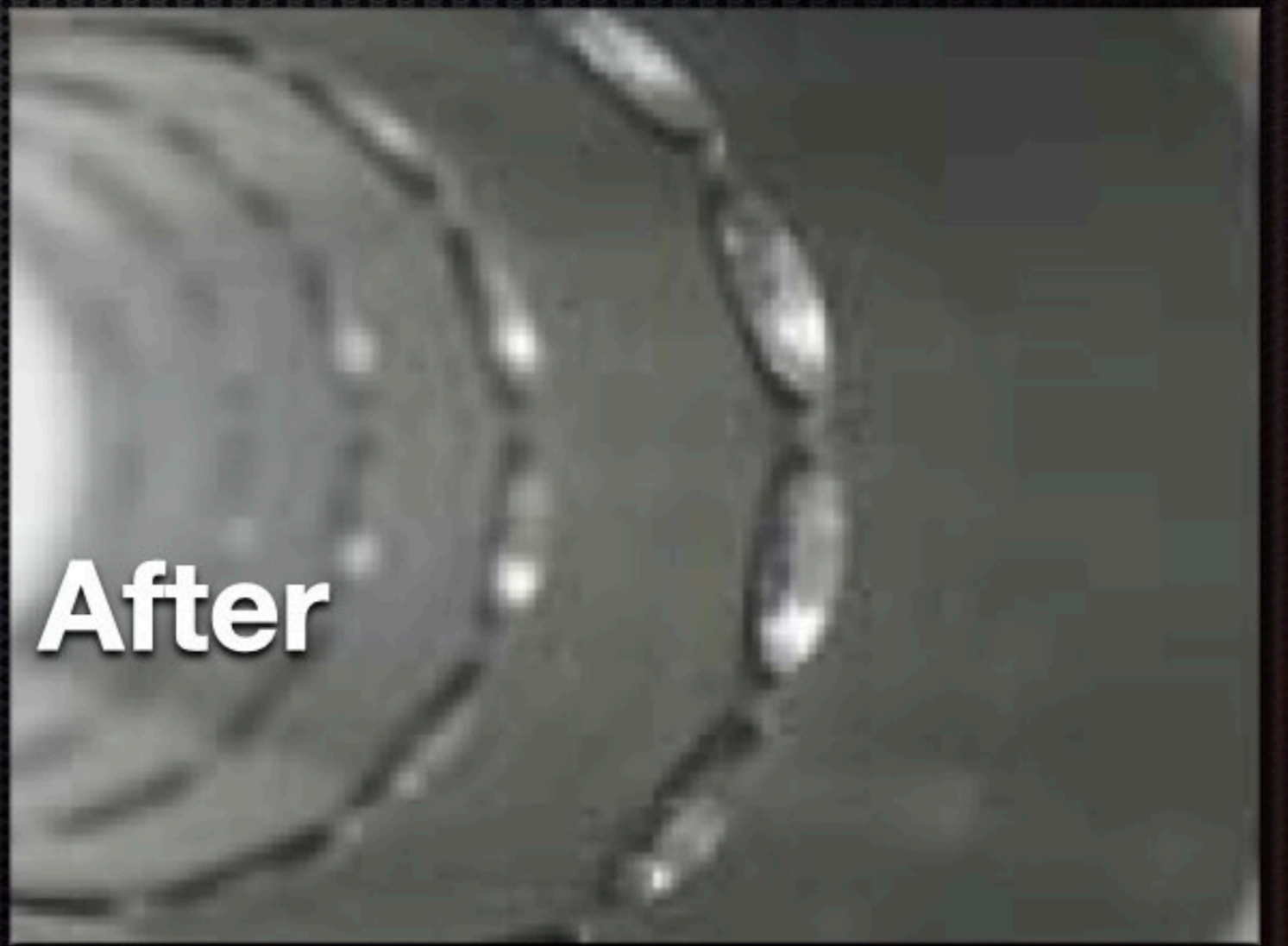
FLEX-HONE® FLEX-HONE®

Blending In Any Type Or Size Of Cylinder

The hone that floats to the workpiece
with each abrasive globule working
with independent suspension
creating a finish that cannot be
obtained by any other means



Before



After

Major Partners

Brush Research Manufacturing

Kang Yang Hardware

Elpress Crimping System

KSS

Essentra Components
(Formerly traded in the name Richco)

Kyowa Ltd.

Relats S.A.

Flexa Flexible Conduit System

Shinagawa Shoko

Heavy Power